

# ***END OF TERM REPORT!***

## ***2017***

*An Account Of Some Activities During The Year*



**SECOND  
CHANCE**

*Changing The World... One Child At A Time*

# Welcome!

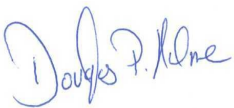
Welcome to our 'End of Term Report' 2017. This year has been an exciting one and we have made much progress in the life of the Charity. The main highlight has seen the completion of our target to purchase the old garden centre as part of our 'Big Project' to enhance The Rural Centre, more of this later in this report!

We have received much support this year from the general public, trust funds, local companies and other individuals. This hasn't just been financial. There have been many working parties, volunteer Advocates, and professional expertise has been given in abundance. With the number of children on our books suggesting we need an income of about £1.5 million, they are the reason we can do it for about £350,000. Volunteers and patrons have made the whole process possible.

We hope the next few pages will give the reader a flavour of some of the things we have done (and will continue to do) over this past year. There's much more to tell but not enough space. The Back to School Scheme continues to deliver encouraging results as children who would not have received (much) education continue to thrive back in mainstream schools and children who cannot cope with main stream continue to be encouraged and supported down a different (but constructive) route.

Next year has some big tasks and projects too, more of this later, but we hope for just as much support and encouragement as this. I finish with emphasising how grateful we are for all you have done for us.

The journey continues...



Doug Hulme  
Chief Executive  
December 2017

## We've done it! ...

### **"THE BIG PROJECT"**

I am sure it's the question everyone wants to know the answer to how. 'How did you get on with the big project as outlined in the last newsletter of 2016'? Well, we are delighted to say that at the end of September we sent the last cheque for £15,000 to the family we purchased the garden centre from. It was a couple of thousand pounds short of the full price but the family graciously waved that last figure to complete the purchase almost on time. It has been a journey, but £800,000 later we can say the garden centre is now ours, with no overheads of loans or outstanding debt!

There is still a stack of practical work to be done though. The site is almost clear of the last of the rubbish. We have the polythene to complete the covering of all the Polytunnels that still remain open. We have begun the construction of a large storage area so that we can empty the cellar, and much of the office space, from our drop in centre in Portsmouth. We hope to complete this by the end of the winter, finances allowing. The big news is we have finally gained the use of our offices on site and are moving our admin facilities there. As we type, this is happening, and we hope to be comfortably ensconced by Christmas. The next step is to open the site up for far more use in the winter by building the much anticipated Fishing Lodge. But more of this later.

We are negotiating at the moment a number of work place placements on the site for older young people. We have proposed several mini enterprise schemes for the young people to take part in



Cover Picture. February and a game of Ice Hockey in front of our cottage in Finland They were swimming on the exact same site in July!

where they will grow a packet of seeds or a bucketful of Koi fry to maturity and sale. They will keep the profits for themselves. A wonderful lesson in life and an invaluable asset to our young people for whom leaving education without a meaningful qualification, despite being quite intelligent, is a frequent prospect. They are going to have to go it alone if they are to succeed in earning a living.



New signs mark the opening of the new centre. The sign for the shop says closed but not for long!



Our new offices taking shape - will be ready for full occupation by the time the reader is looking at this picture.

View of the new office from the front entrance and through the car park. Do please come and visit us, you will be a welcome distraction!



We should possibly consider at this point naming and thanking the major donors to the success of the project but the list is large and complex and we are frightened of leaving someone out. We also pride ourselves in noticing every donation from £10 to £100,000. You really can claim that when you are successfully running an organisation our size, and with underfunding. We really do notice and appreciate every penny and we would hate to discourage any giver great or small. We love you all!

The point here however is that YOU have made it possible for ongoing generations of children to come and benefit from this lasting asset. Many thousands of children will pass through the gates above in the years to come, hopefully gaining in abilities, confidence and usefulness. To transform the quality of their lives is our main goal.

Thank you from the bottom of our hearts.

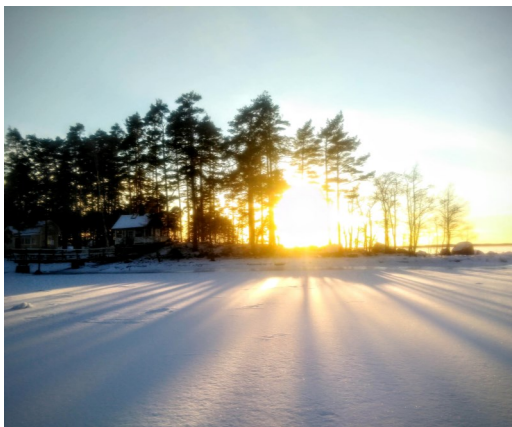
## **FINLAND 2017**



Just a few photos to show you the flavour of Finland in 2017 spent at our cottage once again. To walk where they once swam, to wrap up warm where they once wore swimming kit. It's an education for British inner city children. They also can't dictate the terms to mother nature. A good lesson.



*Ice Fishing with short tiny rods after drilling the hole in the ice.*



*If you get tired or cold ice fishing you can always shelter on the ice!*



*The view from our picnic area on our cottage property  
The Baltic is a big chunk of water to freeze, here we are choosing the ice hockey pitch.*



*Volunteer Steve Smith inside the finished Igloo with willing Assistant—you don't see that in Hampshire very often!*



Setting out on an expedition across the frozen Baltic, in search of the 'well of life' a warm water spring in the next bay round—what a wonderful adventure for an inner city child and a drink of the purest water at the end. This is Finland 2017!



*The Land Rover still in good use in Finland! Sean Finch, Senior Youth Worker and Tim Smith Projects Manager and Youth Worker on their way to the cottage with a Land Rover full.*



*Fishing The River Kymi one Wednesday afternoon in August*



*Its surprising what you find in Finland! One of the boys at The Kotka Maritarium finding what it looks like from a fishes view point.*



*Volunteer Murray DeClee supervising a late evening fishing session at the cottages landing jetty. The last group of the year.*



*A Sunset from the cottage, what a pleasure it is to introduce the children to such a wonderful environment.*

**DO WE HAVE YOUR EMAIL?**

**SEND IT TO US ON**

**[charity@second-chance.org.uk](mailto:charity@second-chance.org.uk)**

## ***Dates for Your Diary 2018***

**H of L** – Friday 16<sup>th</sup> March

**Dever Springs Fishery** – Wednesday 13<sup>th</sup> June

and Sunday 7<sup>th</sup> October

## ***House of Lords***

Friday 17<sup>th</sup> March proved to be another epic year for us at The House of Lords. The third time in the Lords but we think possibly our 29<sup>th</sup> in The Palace of Westminster. It has become a family occasion, The Second Chance Family! Neil Freeman once again managed to convince the Patrons to dig deep in their pockets and we raised over £20,000 for the Charity. Save next years date, you will be most welcome.

*The Staff Team at The Evening, L-R Tim Button, (Charity Administrator) Tim Smith (Youth Worker and Projects Manager) Russell Lyne (Volunteer & former senior youth worker) Steve Carey (Trustee), Sean Finch (Senior Youth Worker) Front Warren Hulme (Farm and Fishery Manager) Aki Atkins (Trustee)*



## ***The Great Fire of Titchfield!***

We managed to make all the local newspapers for miles around as well as the local television and radio stations in May—but for all the wrong reasons. It wasn't the bakery but the barn. Early evening after everyone had gone home Chief Executive Doug Hulme was taking advantage of the absence of children and was cutting the grass in the Nature Reserve when he noticed the smoke. Urgent investigation found 3 of the Poly-tunnels, that were used for storing equipment and wood, well ablaze. Smoke could be seen from 6 miles away. The blaze was attended by 3 fire engines and a fire chief. They soon had the fire out but the damage was done; equipment that included trailer tents, boats and outboards,



trailers and farming equipment were all lost. There was some insurance to be had but the company as with all insurers argued about whether some items were covered or not and we never recovered the full costs to the Charity. The best guess from the fire brigade was that a shiny metal surface inside one of the Polytunnels directed light onto a stack of straw bales and ignited them. In the greater plan of things it was a surmountable setback but we are now sorted.



*Top.. The Fire in Progress. Left... As seen in the local paper from 3 miles away! Right... what was left!*



## ***Creative Arts and Cultural Centre***

As mentioned in our last news letter, when we move our administration onto the new site and we complete the construction of our new storage facility, we have an ambition to continue the drop in use of our Portsmouth Centre as a Creative Arts and Cultural Centre for our kind of children. It is a fact that our kinds of young people almost never learn to play a musical instrument, sing, dance or do anything artistic. Leisure activities are few and far between; they rarely include anything sporting and never include anything cultural, like going to the theatre. We want to address this situation. It so happens that several of our volunteers and two of our staff are professional musicians, one is a music therapist. We have a married couple who are black belts in Taekwondo, the list of matching skills is impressive. We need to do some work on the building in equipping it and maintaining it and already The Portsmouth and Southsea Rotary Club are keen to support the young people of Portsmouth in this way. The Salvation Army are involved in a creative arts project with a London music college and are keen to share the project with us. We are now on the look out for donations of musical instruments, recording and amplification equipment, mirrors for the walls, laminate for the floor and much else. Sponsorship and expertise will be gratefully received!



## ***New Storage Facility at Solent Nurseries.***

We have started to build a new and large facility to store all our equipment in. Fishing tackle, camping equipment, office supplies and equipment, vehicle spares, clothing, furniture, donations, tools, machinery—you name it! All of this currently languishes in the cellar at our Portsmouth Centre. Things get lost, broken and not used in this way. We have a volunteer who wants to be the Charity's store master and look after and control the stores. We think this is a good idea and it is currently our number one priority. We still need some more materials for finishing this - insulation boards, lining material like Conti board, wiring for electrics, plumbing, a boiler for the heating, and polycarbonate roofing sheets.



The youngsters are enthusiastically engaged in this project too... education with a capital E.

*An early season carp for this youngster. Success is such an important part in our work*



*Work is progressing on our new store. Much of the materials so far has been provided by Borderland and Abbey Garden Buildings.*



## ***Farm***

The Farm continues as always to provide fascinating experiences for the young people who all come from inner city areas and learn that cows don't lay cartons and chickens don't have shiny clear coats. The lambing season is always one of the most educational periods for this and although the wow factor of newly born lambs is great the opportunity to watch a birth is exceptionally worth while - especially for the boys when the similarities to humans and giving birth is always greeted with incredulity. It's another facet to our mentoring and positive role modelling for the boys as we try to make them better partner and parent prospects! It might delay the birth rate amongst the girls too! There are over 40 sheep in the flock now, and the youngsters have just completed a second chicken run so we can increase their numbers too.



## ***Working Parties or is that Party's?***

There is only so much you can ask a young person to do, even if they are 18. They lose concentration and application, even with supervision and encouragement ... SO ... we are very grateful for the companies and organisations who come and make their community involvement through a working party or two at our centre. Some like Gemalto appear year on year and it means so much to us. Here are a couple of photos of the Zurich Insurance team, who work locally to us and have many connections to the Charity.



Zurich Insurance, Working Party. Let's remove The Himalayan Balsam!



## ***Farewell To A Great Friend.***

Since the publication of our last newsletter we are very sad to report the loss of one of our original volunteers and very first staff member, Jim Hickey. Here Doug Hulme writes a tribute.

*'Big' Jim Hickey...*

*It is with immense sadness I have to announce the passing of Jim Hickey. Jim was our very first senior youth worker, he was in charge of the youth work. A role he fulfilled for over 10 years and only reluctantly stepped aside when his back injury meant he could no longer operate at the level he wanted to with the children.*

*Those 10 years or so were the formative years of the Charity and he was my right hand man; he walked through all the trials and tribulations of the birth of Second Chance with me. He was part of my family and was one of the few people I would entrust the welfare of my 3 boys to. As Oliver entered the world he too, for his first few years joined with my boys.*



*Jim in 1985 with three of our very first young people*

*Jim would be found camping and fishing with us from places as diverse as The Thorpe Park Leisure Centre to Lake Bala in North Wales or The River Tweed in Scotland. He was in at the birth of our Finnish centre in Scandinavia. We first met in 1984 when Jim was managing Vince Davies' Angling Shop in Staines and we just hit it off. Jim had a passion for angling and for passing it on to the kids. He took a great interest in the youngsters and when his job at Davies Angling came to an end he came to work full time at Second Chance. It was still called 'Foster an Angler' when he arrived and he was part of the growth that led to it embracing so much more than just fishing and he helped turn it into an independent and very innovative social working agency that Second Chance became. That it is still going strong today is testament to those foundations that Jim helped us lay down.*

*It was the lasting relationships that he created with the youngsters that will be his legacy. Those early days young people are now in their 40's and older than Jim was when they forged their friendships with him! I have had some moving conversations with some of them as I have circulated this sad news. So long as they live there will be a little bit of Jim that will live on too; he formed many of their ideas and characteristics. A role model to be proud of and for many of our youngsters it was the first positive male role model they had come across. The fact that he played American Football and caught huge carp just made him such a super hero to them. He never let them down and always showed them there was more to life than the mundane and the negative.*

*He always had a scheme or an idea that was going to make him a fortune or change the world. He never quite made any of those schemes into startling reality but what he never realised was he HAD actually changed the world... one child at a time. I am reminded of the old story that took place on a beach at the shoreline after a big storm. Thousands of star fish had been washed up on the beach and were slowly drying out and dying. An older man was taking a walk that morning and could see a young boy in the distance frantically throwing these star fish back into the sea, one after the other, as fast as he could, but there were thousands and thousands of them. When the older man got up close to the boy he asked what he was doing and the boy replied he was saving the star fish. The old man was a bit cynical, and said "there are hundreds of thousands of star fish on the beach, you can't make any difference to the situation" ... "no" replied the boy as he hurled another one as far out to sea as his young arms would allow "but I made a difference to that one"!*

*So it was with Jim. There may be hundreds of thousands of children that are abused, come from dysfunctional families, have learning difficulties or are poverty stricken in the UK today, and we can't fix all those problems just now, but Jim made a difference to the lives of the children he touched through Second Chance... he changed the world, one child at a time.*

*Farewell old friend, you will live on in my heart and the hearts of those you touched... Doug"*



*The simple days of youth... the bare essentials, a couple of friends and a safe environment... like it used to be! Our Nature Reserve site in May.*



*Sea Fishing off the Jetty in Portsmouth Harbour*

## ***The New Fishing Lodge***

Now that we have paid for The Big Project, we need to capitalise on that asset. In many ways we bought the new site in order that we could build a fishing lodge on it!

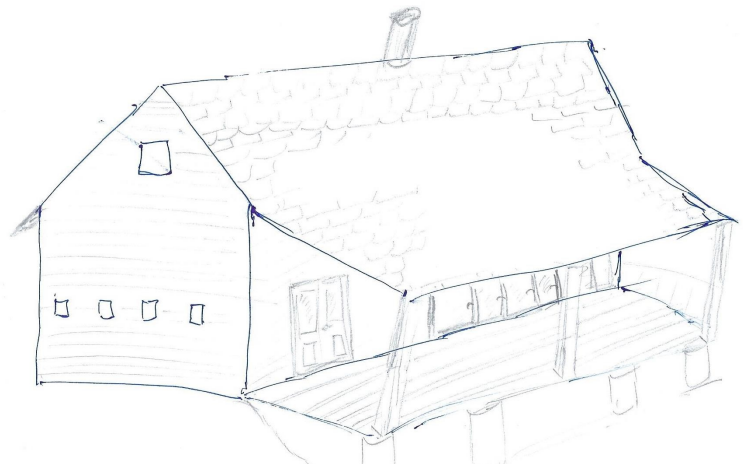
The new lodge is going to be built at the very bottom of the new site on top of the hill overlooking the nature reserve and farm. It will be just above the bridge connecting the two sites. From the veranda you will be able to stand and survey 80% of the nature reserve and farm.

It will be timber framed, oak planks, and traditional clay tiles and generally fit into the environment it's in. It will have a highish vaulted ceiling. The main room will be capable of seating 50 or so. At one end there will be a kitchen and dining area with a mezzanine floor over the top. At the other end of the main hall will be the showers and toilets again with a mezzanine floor above. Over the kitchen and the showers will be a loft where we will be able to sleep 5 children at each end on low to the floor beds, Scandinavian style.

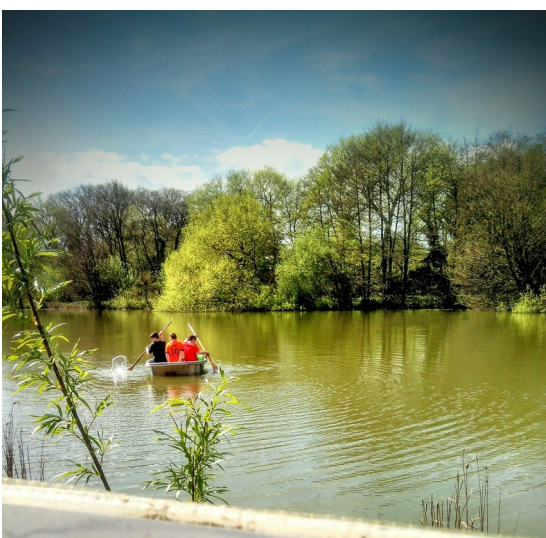
The veranda will have a continuation of the roof and will come far enough out to provide space to entertain and eat in the dry but still be outside and part of The Nature Reserve.

This building will extend the range of activities we can undertake right through the year into the winter months when the tented accommodation is not practical. It could be we may get some income too from renting out the facility for conferences and meetings when the children are not using it.

Its going to be the most important development since we created the Rural Centre. Finance will be the first hurdle; we anticipate it might cost £60,000 or so. Anyone with an inclination to help would be very welcome at this early stage. Doug says an artist to improve on this awful sketch would be welcome!!



The first, crudest and most inaccurate sketch of the new fishing lodge—much work to be done on it yet!



*Left... The Lodge will overlook The Mill Pond here and help with catering as above. Photographs taken May and June respectively.*

  
SECOND  
CHANCE

THE SECOND C



Left... Sea fishing on a boat out in The Solent.

Below... The Nature Reserve provides a never ending classroom of Education!!



Another success notched up.



Above ... camping, fishing AND watching a movie—how versatile is that!

Left... It's not all fishing, golf sometimes too.

Below... A ghost carp nearly as big as him. What a difference these captures make to a young persons confidence and self respect.





There Are Monsters In The Mill Pond!

**Other Capital Projects We need Help with...**



We need a 13 ton digger for all the work we have to do on the Rural Centre; buildings, landscaping, water courses... This 2011 model at the time of writing would cost us £24,650 on eBay!!

**Fishing Tackle**

**Old Cars & Mopeds**

**Building Materials**

**Hay Cutter and Bailer**

**Musical Instruments**

A 17 seater Mini Bus . Our two buses are getting very tired we need to replace at least one of them. This one on eBay as we write would cost £18,995



*This 'End Of Term Report' gives but the barest of details and just a mere flavour of what we do. Our 'Back To School Scheme' keeps us incredibly busy engaging young people that have left the system, encouraging them back to school and supporting them when they are not there. 'Parenting Classes', 'Mini Enterprise' and 'Work Experience' too.... Many of our families and children are living in poverty, some have been abused, others unprepared for life and unsupported by a dysfunctional family. It's not their fault, they were born into this. They deserve a second chance with more support and better odds. Please help us do just that now. Thank You.*

***"You Can Easily Judge The Character Of A Man...By How He Treats Those Who Can Do Nothing For Him!"***

The Second Chance Children's Charity, Solent Nurseries, Fontley Road, Titchfield, Hants, PO15 6QS  
Tel 02392 872790. Fax 02392 737550 Email: [charity@second-chance.org.uk](mailto:charity@second-chance.org.uk)

**Web Page: <http://www.second-chance.org.uk>**

Registered Charity Number 1001462. Established 1984, Bankers The Unity Trust Bank 60-83-01 Account No 20142951