

Ways To Give To our Work...

Just Giving - You can now donate on line, simply go to the Just Giving website and search for Second Chance Children's Charity or type in <http://www.justgiving.com/secondchancecharity>

JustTextGiving - You can donate to the Charity by simply texting "SCCC02" followed by the amount you wish to donate to 70070. For example, if you wished to donate £10 to the Charity, you would text 'SCCC02 £10' to 70070.

Paypal - www.paypal.com - our email address to donate to is charity@second-chance.org.uk.

Credit or Debit Card - (Not American Express). Card payments by telephoning the Second Chance office and speaking to Collette on 02392 872790 or by sending card details in 2 separate emails to the above email address.

Cheques made payable to Second Chance Children's Charity and sent to the Charity's address.

CAF Cheques.

G.A.Y.E Scheme.

Direct Bank Transfer - our Bankers are: The Unity Trust Bank, Nine Brindley Place, Birmingham, B1 2HB. Sort Code 08-60-01 our current account number is 20142951 "The Second Chance Children's Charity"

If you pay UK tax - you can increase the contribution we receive by simply indicating your wish to us to apply Gift Aid when you make a donation..



Fishing, Camping, Camp Fires, Team Building Rafts, Cooking for yourself, swimming, sleeping under the stars. Lots of major '1sts' in your life. These are a few of the things that a week away with the charity at our Rural Centre in Hampshire or our cottage in Finland can mean. Meanwhile our social work and education go on round the clock. It all makes for the time of their lives. Days that will live with them forever. Time and again they have come back as adults to tell us so.



"You Can Easily Judge The Character Of Man...

...By How He Treats Those Who Can Do Nothing For Him!"

The Second Chance Children's Charity, Second Chance House, Somers Road Bridge, Portsmouth, Hants, PO5 4NS

Tel 02392 872790. Fax 02392 737550 Email: charity@second-chance.org.uk

Web Page: <http://www.second-chance.org.uk>

Registered Charity Number 1001462. Established 1984, Bankers The Unity Trust Bank 08-60-01 Account No 20142951

END OF TERM REPORT!

2014

An Account Of Some Activities During The Year



Changing The World... One Child At A Time

Hello!

It is a great pleasure to welcome you to our "End of Term Report". Here you will find a flavour of what we have been doing during this year and perhaps more importantly what we have planned for 2015. There have been many other projects and processes but the economics of printing and space mean we have just included what we could.

We have found the year to be full of irony and unusual times. On the one hand we raised almost £400,000 to pay for the purchase of the Garden Centre and yet on the other we have struggled to pay the bills and meet the staff expenses. It seems people prefer to support capital projects rather than the actual running of the charity. We live in exciting times and the continued acquisition and development of Solent Nurseries adjoining our Rural Centre in Hampshire is now picking up pace and I strongly recommend you spend some time reading our plans for this site later in this newsletter. We need to raise a further £350,000 to complete the project and if you can help (or know someone who could) you would be doing the charity (and the children it seeks to give a second chance to) a great service.

We live in Politically Correct times and this makes life very difficult. It seems to us that common sense has gone out of the window to be replaced by totally risk adverse 'recommended practice'. The result of this is an ever increasing queue at our doors of young people that cannot be accommodated by main stream services. Schools, Social Services and other charities are all asking us for help because they cannot engage the children within the current guidelines and framework set by this political correctness. As we write this newsletter we are reading reports from across the country that are beginning to accept what we have been saying about the importance of play and freedom from structure in developing young minds. What large institutions and bodies can't seem to get right however is the balance between allowing children to play and enjoy themselves but still giving them guidelines and parameters to work within. Here at the charity we are somewhat old fashioned and we find the youngsters thrive with boundaries and guidance and soak up the freedom we can give them because they have learned to co-operate with that system.

Can I take this opportunity to say a massive 'thank you' for supporting us during the year and making the progress we have made possible. It is never taken for granted and we notice and appreciate even the smallest of donations, nothing slips past us unnoticed you really do 'make a difference'. Thank you

Doug Hulme
Chief Executive
November 2014



House of Commons Dinner and Auction

Our Annual Dinner and Auction at The House of Commons on Friday 7th March was another great success and we think everyone enjoyed themselves immensely, the company was great, the food good, The Auction entertaining.

We sense that this evening is becoming a 'family' affair... The Second Chance Charity family! Old friendships renewed, new ones made. The evening was moving and inspirational and everyone really got behind the charity.

We are delighted to record that after all the expenses have been taken out and all the monies paid in, we made almost £20,000 for the charity.

This was great news, especially since we were enjoying a successful capital appeal to buy the old garden centre next door and this meant that we were struggling to gather in income for the day to day running and fulfilment of our charitable objects. This amount went a long way to helping these efforts. Thank you to all of you who helped in any way at all (more of the capital appeal elsewhere).



Cover Photograph. Head of Youth Work, James Nice, helping one of our youngsters cradle a 21lb Carp. Taken beside our own Mill Pond. Catching a big fish like this is sometimes the first success our young people have ever tasted in their lives!

This unit would be an ideal size and site. What we want to do is replace the glass and cover the framework with insulated metal shuttering, perhaps 40mm foam insulation on a plastic coated corrugated sheet. The middle span or apex we would like to keep clear and so would fill that entire span with clear Polycarbonate multi walled roofing sheet giving us natural light and insulation at the same time. There will also be a kitchen and toilet in one corner (existing water and waste services being only a few feet away). Electricity and plenty of sockets along with some lighting and we would be done. If things don't work out on site with our offices for a short while we might be able to use the area for office space as well. We need someone with a construction background to come in and complete the project, it wouldn't take too much effort and we might even be able to contemplate taking the project on ourselves if we had the materials – the tin sheeting and polycarbonate is going to be expensive at a guess I would say the unit is about 15 metres by 30.

FISHING LODGE

Next to raising the outstanding balance of £350,000 our biggest project is to build a Fishing Lodge at the bottom of the Nursery section. We need an area that we can accommodate the youngsters in the winter enabling us to extend the use of our nature reserve and other facilities. There is already an old broken down storage area that has been in existence for many years and is indicated on the O.S maps of the area and on the deeds so... we don't need planning permission. The vision is for a traditional oak/timber framed building with an extended balcony overlooking the main lake and nature reserve. At the point we have in mind, it is possible to see almost all of the land (a great safety and security feature). We envisage the main area to have a vaulted ceiling, timber clad with a large wood burner for the winter accommodating perhaps as many as 100 people. At either end of this room would be a kitchen and dining room (for about a dozen people) at one end, toilets and showers the other. These two areas would have a roof over them creating a Scandinavian bunk area above them where children could sleep in cold times and so spend residential breaks in the winter. We thought the idyllic position of this facility might mean we could make some additional income from it by hiring the facilities out when not in use by the children. Again a financier or a builder is what's required!

13+TON DIGGER

We have been able to borrow one from JCB and Caterpillar in the past but we really need a machine of our own for many tasks onsite that remain ongoing. The Nature Reserve, Farm and Garden Centre have years of work ahead of them that need a digger of this size constantly. It doesn't have to be new just reliable. Metal tracks and a range of buckets and we would be in utopia – any offers to provide or to finance? (£15 – £25,000 would buy a reasonable 6 or 7 year old second hand model).

3-5 TON DUMPER

There are many everyday uses for a tipping dumper around the Garden Centre and on the Nature Reserve, top soil to be moved, tracks to be laid, banks to be maintained. We don't need a large one because we operate in quite confined spaces. A second hand dumper would cost us about £5 -7,000.

SECURITY CAMERAS

Many of you know that we have had some security issues this year. Fish and Swans taken, ordinary fishing poachers, equipment stolen - Someone shinned up a telegraph pole and stole a security camera that recorded images on a memory card so all record was immediately lost. The same for a hidden security camera when thieves broke in and stole tenants plant and equipment. We have had problems with poachers, rambles and vandals. Is there a security expert out there with equipment to install? We have some ideas of our own but need the finances to purchase equipment. We estimate we need about £3,000 to spend on equipment to make the sites much more secure and give us a better picture of what is going on in the place. Very necessary when you think we have a duty of care to some very vulnerable young people.

OLD 40' FLAT BED TRAILER

We have a wooden foot bridge which we built with the youngsters participation and the support of a trust fund. It connects our garden centre to the nature reserve. What we have found is we need a bigger bridge to span the carrier stream for grass cutters tractors and children to cross more readily. The easiest way to do this would be to acquire an old flat bed lorry trailer. Ideally without the sides but we can cut them down if we have too. We will cut the wheels off and simply lower the lorry body into place – job done. A donation of an old trailer would be the best result for us.

TIMBER AND BUILDING MATERIALS

Over the next ten years we have a plan that involves renovating buildings and modifying a substantial amount of accommodation on the site. We have a need for timber, sheeting, boarding, nails, screws fixtures and fitting, wood preservative, sand, ballast, cement – all that sort of stuff. Anyone finishing a project off with material left over could donate anything to the charity. We have storage available and you could save us a fortune!!

RE SKIN THE POLYTUNNELS

We have a number of the Poly tunnels that still need reskinning. Each span costs between £500 -£900 each, depending on size. We can't start growing until we are covered! We need either a company to reskin them for us or the finances to pay someone to do it. They are a tricky project to complete well and they will last 2 or 3 years longer if done well!!



Young Claudia and Cole, along with mum have been raising money for the charity during the year. Here they are at their cake sale. Thank you for being so caring.



Portsmouth Rotary Present Doug With a Cheque For £500 in April

DO WE HAVE YOUR EMAIL?
SEND IT TO US ON
charity@second-chance.org.uk

Sadly it will be the last time in the immediate future that we eat in The Members Dining Room for this event. During the year the management committee for the House of Commons decided that we should, from now on, have to pay £5,000 to hire the room. This is in addition to the normal charges for the food and drink and other expenses such as flowers, PA system and the like. This is really too harsh for the charity and put into question the investment of time and effort versus the return. We shall miss the nostalgia that has been amassed over the years by using the same room and we have grown very fond of the staff who have looked after us magnificently over a 24 year period. Not to be deterred... I am delighted to report that The House of Lords Dining Room is being made available to us free of charge. It seems that the Lords and their management committee have a greater measure of sympathy and philanthropy! The move will make no difference to the format and enjoyment of the evening it just means we will eat 50 yards down the corridor from before!! Get the date in your diary Friday 13th March 2015, you will be very welcome.

Date For Your Diary
PALACE OF WESTMINSTER
HOUSE OF LORDS
Dinner & Auction

Brass Band Concert by The Salvation Army

On Friday 21st March we had a fund raising concert here in Portsmouth. The evening was very well attended, the atmosphere great. Many old friendships were renewed some new ones made.

The band were great, Major Geoff Chape (known to many as the man who said grace at the House of Commons Dinner!) turned out to be an excellent Chairman, Pastor Geoff Wood gave a great appeal on behalf of the charity. A special word of thanks should go to Bandmaster John Bird for offering to do the concert and for the organisation that went into it.



The Arqiva Company Busy on the 'Give and Gain Day' in May. Clearing the way for the play area in The Seedlings centre.

I am delighted to say that following the appeal and adding to the donations received from those who couldn't attend, the charity was richer to the tune of £8,630! That is an extraordinary amount for this kind of event and I have been deeply touched by the generosity of giving and by the personal words of encouragement that have been received.

Go to the bands website for a full report of the evening www.solentfellowshipband.co.uk click the News Page and March 2014.



PORTSMOUTH GRAMMAR SCHOOL DO IT AGAIN

We were thrilled to welcome back over a 100 6th form pupils from PGS for an afternoon of hard graft and fun. Its amazing what they achieved in a few hours. Thank you for your continued support. What a great bunch!

SPONSORSHIP IN KIND/PROJECTS WE NEED HELP WITH...

The following are some of the projects we want to undertake or start this year. Maybe your company has expertise they could devote to us or maybe someone would like to sponsor one of them and pay an expert to complete it? Just a thought – sometimes its easier to do it for us using your resources than to donate money.

ELECTRICITY

The new site extends to some 7 acres, some of it is taken up by the House and its garden and some by the office block. There is however a large area that hosts some 10 Polytunnels or greenhouses. Two of which are almost at the bottom end by the riverbank We also plan to build a fishing lodge at the very bottom, overlooking the river and nature reserve. All these things require electricity. We have a main spur which runs to some of the Polytunnels (though it is prone to trip – especially in wet weather). What we need is an expert electrician to wire the whole site up for us or someone to pay an electrician to wire the whole site up!! I wonder if there are any electrical engineers/builders/developers out there whose company or a friendly company they work with might undertake such a project for us? I am told armoured cable is expensive.

WORK & STORAGE UNIT CONSTRUCION

We have an old greenhouse structure that consists of three spans the frame work, guttering and foundations are all rock solid. The old timber and glass inserts are not and need to be replaced. We need an onsite storage facility for fishing tackle, camping gear, construction materials and a kitchen and toilet area....

The Ladies From LAS IGUANAS present Doug Hulme with Christmas Presents for the youngsters Thank You Hayley Collins, Sophie Norris, Claire Salmon



HR Director, Paul Dowie, from Architectural Coatings Company, Is Pictured (taken by AC's Rob Filley) Presenting C.E.O Doug Hulme with their Cheque in support of the work done at Second Chance

Meet The Youngsters...

Our old friend and publishing magnate, David Hall, once said to us “The problem with you is that you are shrinking violets!” He was referring to the fact that we don’t really advertise what we are doing. An advertisement of course is the very reason someone would choose to support us. The problem we have is how do you depict or portray a young person whose problem is they have been sexually abused by a relative? Or how do you tell the world this child has learning difficulties. Even harder, since many of the families can read, that this child comes from a dysfunctional family and might actually be better off without their parents?

It’s one of the reasons we have so many pictures of the youngsters catching fish or enjoying a holiday together. They enjoy the success of seeing their picture published, it’s an achievement something to be proud of – but it says nothing of why they were referred to us.

However I thought this time round we would introduce you to some of the children. Their names have been altered along with the odd detail that would otherwise have made it possible to identify them.

Here are the referral texts from a random sample of young people this year. These are the actual words of two school teachers, a social worker and a youth worker for a large children’s charity. These cases are on the milder and less complicated side of our normal work load but thought you might all appreciate a flavour of what we do, day in and day out, and explain why we are ‘shrinking violets’.

These samples could come from anywhere geographically, The West Midlands, North East Kent, the North West, London, Surrey or Hampshire, I really don’t think anyone would be able to fathom their identity but they are real and have come to us in the last couple of months.

Sample One

Gareth is 10 years old and lives with his maternal grandfather. He still has full involvement with his mother who picks him up from school and engages with school around his needs; however she does not live with Gareth. She lives with a new partner Gareth’s 2 younger siblings (different father) and her partner’s children. Gareth’s Mum is at present working with the Area Locality Team and regular TAF meetings take place.

Gareth has a very strong relationship with his Grandfather and calls him Dad. His Grandfather is supportive and at times can be the only person Gareth will respond to. Approximately 18 months ago a house fire destroyed the family home and the family had considerable disturbance to their lives which had a significant effect on Gareth, the family have since returned to the home. Following full assessment Gareth now has a statement of educational needs, and has 1:1 provision in the mornings. He has a low working memory which halts his learning; he also has low self-esteem and resilience around his learning.

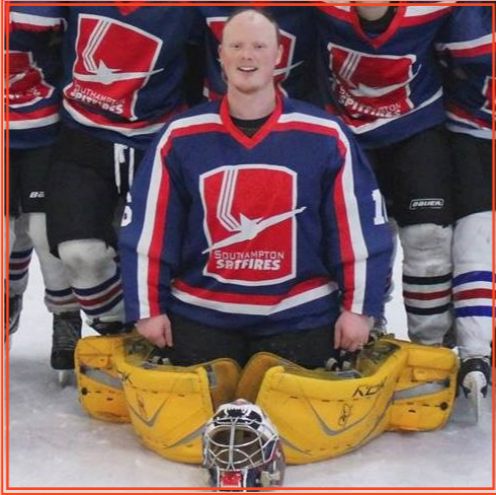
These factors have led to Gareth disengaging from his learning and at times causing disruption to the school day, this in turn has led, sadly to exclusions. The school day for Gareth has been adapted so that he can have access to a well differentiated high quality curriculum combined with suitable breaks and rewards. Strategies to develop resilience and working memory are also incorporated into his day.

Gareth is struggling with peer relationships and friendships which can cause difficulties for breaks and lunchtimes, which can lead to enticing others into inappropriate behaviours. Gareth has received support from an ELSA (Emotional Literacy Support Assistant).

Gareth is a likeable young man who has an active interest in all things outside. He is always keen to work outside in our allotments and gardens and takes a keen interest in nature. He has voiced that as he gets older he wishes to learn to drive cars and motor bikes. I am led to believe he enjoys fishing and is taken by his Grandfather at times. He is an active boy who enjoys sport, but can struggle with rules and turn taking in organised sports/events however he can be incredibly competitive. It is hoped that a referral to Second Chance would give Gareth opportunities to support his emotional growth, self-esteem and well-being and as a school we would actively support Gareth in the ventures he takes on.

Sample Two

Harry is aged 12 and is currently in year 8. Harry joined the school as a year 7 pupil. Harry struggled to cope in a full class situation for the whole of year 7 and it quickly became apparent that he would require a more intensive programme to help him cope better with the school’s expectations. He was placed with one of the school Learning Mentor’s and his timetable was reduced to two lessons per day. At the start of year 8 Harry



Jon Booth One Of our Youth Workers Undertook The Great South Run... In Full Ice Hockey Goal Keepers Kit! Thank You To All Those That Sponsored him he raised over £6,000!

The Hobbit House was Nathans idea and he has achieved what is beyond doubt an original and brilliant element to the centre. Incorporating a hill, a jumping off spot, natural stone and wood, sensitive planting and especially somewhere to hide (note the spy glass in the door for looking out) this is a truly inspired undertaking already well appreciated by the many who have seen it.

The Sensory Garden

Any garden worth its salt will incorporate a sensory garden for children and adults alike and we are no different... Designed to incorporate the 5 senses we now have a large and interesting ‘grass’ area, a well designed bed for touching and smelling, a fairy garden, light catchers, streamers, mirrors, art-work, decorations and finally some super large planting for budding ‘explorers!’



The Entrance

This is a large area leading into the centre that has had to be reclaimed, planted and designed imaginatively by Nathan and again using a lot of materials and objects that were inherited with the site

Summing Up

The completion of ‘The Seedlings Centre’ is nearly on us and a great deal has been achieved over the past 18 months through sheer hard work, inventiveness and ability of which Nathan has been in the forefront. We have achieved much through a small budget. This large and completely unique area and the ability that Nathan has shown is already a shining example of tenacity and resourcefulness which he has shown in abundance and bodes well for the future of the rest of the site.

Nathan Departs...



Nathan and his New Zealand fiancée Meredith returned to the country of her birth at the end of August to prepare for their marriage and a new and bright future for them both. Jill’s account of the Seedlings hopefully shows how Nathan almost single handedly brought planning to life within what was a pretty dire area... seeing it now is to appreciate the sheer volume of work that has been required to bring it to this stage. He has worked hard and with a passion for bringing the vision to life. He is an asset to any project he encounters and will be sorely missed by this Charity. Before he left we had an unveiling of his work and a ‘thank you’ party for him, here are some photographs of the occasion. He unveiled the name stone, some of the Trustees came to thank him, Pastor Geoff Wood was our spokesman, there was a cake with a picture of him planting the centre piece tree!



THE SEEDLINGS CENTRE

To give you a flavour of what we are doing to restore the nurseries to their former fully functioning glory. I asked Jill, our Pre-School Manager to outline the plan and realisation of what we have called 'The Seedlings Centre' We will give the same treatment to all the areas of the Garden Centre and Nursery as soon as we can and we are so grateful for all the working parties that have taken place this year, please don't stop volunteering, especially you companies.

"This new site however was, and remains, a real challenge! After consideration and debate it was decided to prioritise the stretch of 4 very large adjoining tunnels near the top of the site and make them good. This venture has been tirelessly worked on over a period of 18 months. The vision? To turn them into essentially an indoor rural experience centre!

It began with just a mess and one very talented young man who came alongside us, working with great enthusiasm and a lot of imagination to bring it to where it is today, August 2014. Although not totally completed, the end is in sight and you will see from the photographic evidence just how much it has been transformed!

This article is all about the planning and hard work and vision that Nathan has put into this special area at Solent Nurseries. Within them he has endeavoured to incorporate an educational but fun rural experience and imaginative play area for preschool and early years children.

The Circle Garden

The first area has become the 'Circle Garden' which is totally Nathan's design. He has used a lot of discarded materials that we have inherited with the run down site and used imagination and foresight to create an area that is full of trees and bushes and plants but which will offer a stimulating and interesting children's garden, even more so as the plants establish.

At the end of this area is a children's picnic area, a very original sand pit (also Nathans design) and 'Lavender Lodge' our site office!



The Fish Ponds

Within these polytunnels 2 fish ponds already existed. These have been brought to life. They are very well stocked now and their surroundings have improved totally. This is a very effective area for holding the interest of children and adults alike. The 'rockery' adjoining is also Nathans design and was deliberately created for children to clamber over safely, harming neither themselves nor the planting!

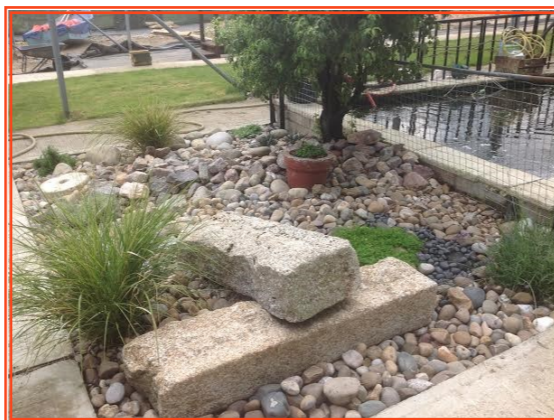
The Lawn

The central section has been made over to lawn – a commodity that is in short supply in many children's lives - and will for us become a very practical area for picnics, games, walking barefoot, running about etc

It should be noted that to achieve any of this every surface in the tunnels had to be cleared of everything including huge amounts of gravel, which was washed and reused elsewhere and even concrete paths. Their removal was a massive work but has opened up the play areas significantly!

The Play Area

Moving to the play area, the concept of this was to give opportunities for imaginative but natural play... using ideas from the countryside and nature itself. There is still a lot of smaller items in the planning to make and add but the 3 main areas are in place... 'The Club House', The 'Lake' and the 'Hobbit House'!



remained on a reduced timetable which was set-up as a 'nurture group' with one other pupil still in a 1-1 staff ratio. Harry has made significant improvements this year both academically and socially but there is still a long way to go. Harry spends a lot of his spare time in the family home in order to prevent issues within his local community. However his favourite pastime, apart from the X-box, is fishing.

Harry has significant problems with trust and is therefore only able to work in a one-to-one situation. He needs consistency within a firm structure where he will then begin to feel secure. When Harry feels insecure he is unpredictably volatile. It is for these reasons that the referral is being made so that Harry can be given the opportunity to succeed and develop enough control over his temper so that he can sustain a full timetable.



Rafting In Our Mill Pond In The Summer

The family have a long history of involvement with social services due to on-going neglect concerns. The parents themselves have learning difficulties and both Harry and his brother Logan have significant learning issues and a suspected chromosome deficiency.

The parents learning issues impact on their ability to provide consistent care for the children and they struggle to implement clear boundaries and routines. The parents also struggle to maintain the home to an acceptable condition and keep it clean and hazard free. Harry and his brother's present in school as grubby and unkempt and their behaviour at both school and home is challenging. The boy's regularly attack one another and Logan particularly is reported to regularly attack his mother. It is not unusual for the children to have bruises, scratches and other injuries due to fighting with one another.

There are on-going issues with the children bed wetting and with Logan defecating and smearing this around the home. The parents struggle to manage their money and their debts and the home is sparsely furnished, with bare floor boards. The family as a whole are living in poverty and are socially isolated due to the parents own learning and emotional difficulties. The social isolation and poverty prevents Harry from having the opportunities to participate in positive activities within the community and it is believed being given these opportunities would enhance his self-esteem and confidence.

The parents are aware of the issues they are experiencing and state they do struggle with managing the children's behaviour. Dad in particular has stated that he feels he had lost his bond with the children, as they have become older and more challenging. Both parents present as struggling to understand the emotional needs of their children and deal with behaviour by shouting and blaming

Sample Three

Damien is a 9 year old boy in Year 5 who is currently not attending school (19.5% attendance). He is working with TRANSFORM, for his anti-social behaviour which includes setting fires and breaking into properties, we also believe he may be involved with drugs but have no proof. He continually runs away from home and Mum does not know where he is. He has recently been appointed to a social worker due to neglect. Worryingly Damien was coming into school and falling asleep sometimes for hours and we were quite often unable to wake him. He has a very poor diet and often would not eat his school dinner. He looks very unkempt, is white with deep black eyes. He does not make eye contact. He often speaks using baby talk.

Damien has stopped engaging with all agencies that are in place to help him, these include PDS, and Western Domestic Abuse. Damien will hopefully be attending an EOTAS Centre 2 days a week after half term, they will work on his self-esteem and the reasons to engage in school, when he is ready we are hoping that he will come back to our school. While in year 4 Damien enjoyed talking about Huskies and was very keen on being able to go to Alaska. He likes Minecraft and Lego.

Sample Four

Amy is in Year 10 at ***** Special School. She was achieving a full timetable but is now not coping and has been on IP (individual provision) but that also is failing. She lives at home with mum, dad and 2 brothers and she is the youngest. The family have a history of drug abuse, domestic violence and disruptive family life.

She is a very angry girl but very academically able and lovely to work with on a one to one basis.

Sample Five

Greta is one of 3 girls in this family with a mild/moderate learning disability. She starts ***** Special School in December. She displays some very aggressive behaviour towards her mother and sisters.

Currently the family are receiving support from the Family Support Team in social care as there are problems with role modelling and management of behaviour in the home. I have completed Triple P Stepping Stones with them - partly in the home and partly in a group. Parents are now accepting that their own behaviour has an effect on that of the girls and are making changes. They have recently been able to implement a sleep plan which means that they are getting much more sleep as the girls' night wakings have reduced. Greta also displays some inappropriate behaviour towards male friends in the home. There are concerns about attachment. Greta has a lot going for her - she is good at art and has been successful in art competitions that she has entered. She is becoming more mindful of her behaviour but I am concerned that her aggression may find further expression in her secondary school.

Parents have experienced some emotional difficulties and are also struggling with finances. I would like to expand her activity level and allow her to see the benefits of settled behaviour. I believe that access to Second Chance may help this. She will be in contact with adults and young people who can be role models for her.



Easter Eggs From The Gemalto Company Went Down Well!

Athens Marathon 2014

Anthony and Tom Payne were a father and son team from Tolleshunt Major in Essex, until Toms untimely and all too early departure last year. Tony said to his friends and associates that after some years of wondering whether he ever would run a full marathon he had decided that, in memory of Tom he would apply and run in the Athens Marathon on November 9th.

It seemed he had chosen a tough marathon to run so he had no target in mind except to finish and feel that he had given his best. He thought quite hard about which charity he wanted to support and raise money for and decided on Second Chance. This was because Tom and he shared a love of fishing and the origins of our charity were to reach out to abused, poverty stricken or disabled children through the medium of fishing and camping and as Tony told his friends 'they continue to use this in their work to this day'. Tom was a generous and caring young man and Tony thought he would have approved of the work we do and when he gets a little more time in the future he hopes to be able to offer some practical as well as financial support to the charity.

In Tony's words "I did manage to complete the marathon but as Doug told me after his son ran last year, it is a difficult course and it was quite a warm day so I struggled a little, especially towards the end with my calves cramping for the last 12 km . I ended up taking around 5 hours, which was longer than I had hoped. The whole experience was good though and I had some great support from my family and friends followed by a week of sightseeing. I have been really pleased with the amount of money raised as this not only helps the charity but also provides my family with some comfort to see so much raised in memory of Tom".

Tony set up a Just Giving page (see below) and will be very grateful for any amount that you can donate. We don't think its too late to boost Tonys total but at the time of writing Tony has raised over £6.800 on his Just Giving site alone and he has cheques and cash contributions still pouring in so who knows how much he will have raised...

What a lovely and lasting tribute to Tom – we are sure he is very proud of his dad right now!

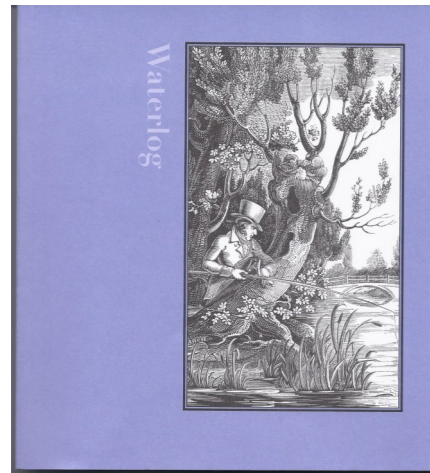
[justgiving.com/Anthony-Payne1](http://www.justgiving.com/Anthony-Payne1)<http://www.justgiving.com/Anthony-Payne1>>"



Anthony Payne, Toms dad Complete With Athens Marathon Medal



Tom Payne, Greatly Missed but A Lasting Legacy



Waterlog Magazine...

We are pleased to say that the prestigious Waterlog Magazine carries an article about the charity in its current issue. It marks the 30th anniversary of the beginning of our work.

If you want to know more you can read the article yourselves by buying a copy, priced £10.

These are available online at www.waterlogmagazine.com or by phone 01948 831072 or email waterlog@rightsort.com

It is Autumn 2014 Issue 89

You will find us on pages 52 - 58!

The Big Project Gets Closer To Completion!

The news you have all been waiting for. This project in many ways is the defining moment of the charities long term future... October brought some exciting news from the charity. This refers to our Big Project, the purchase of The Solent Nurseries which adjoins our Rural Centre down in Hampshire.



Following on from our deposit of £100,000 last year, we parted with another £350,000 this year to the owners, it means we are well over half way to our target of £800,000. The exciting thing is that the vendors have now transferred ownership to the charity and given us 3 years to raise the balance of £350,000. We are in, we are the owners!

I should take this opportunity to thank all of you who have supported us on the journey to this point, it is deeply appreciated and not taken for granted. The task has been made all the harder because of the general economic climate throughout this period, others have found the fundraising atmosphere to have been particularly pessimistic, but not us!

If you've missed last years account and any of the updates during the year, the Solent Nurseries and garden centre will be used by children from all over the UK's inner cities. Work experience and education classes, mini enterprises and guidance on self-employment are some of the uses we are working towards. Pre schoolers introduction to the countryside will take place in our 'Seedlings' Centre that is almost complete already. Residential accommodation is planned on the site and the replacement of 2 old mobile homes will lead to 'safe haven' accommodation and holiday provision for some families and the offices already on site will eventually become our national headquarters.

We live in exciting times and the journey continues... if you could help us in our pursuit of the remaining £350,000 or you know someone who might, please do get in touch.



BEFORE and AFTER PHOTOGRAPHS

Only £350,000 To Go - Can You Contribute?